



Klaipėda FEZ

Your **#1** location
for fast launch



Key facts and achievements

2002	Establishment	412 ha	Area size
100+	Business community	5,000+	Number of employees
45+	Number of clients	778M EUR	Total investments since 2002
19	Number of countries	1.76bn EUR	Revenue generated by FEZ companies in 2022

In Global Free Economic Zone of the Year Awards:



Awarded for Fast Launch



Excellence award for non-fiscal Incentives



Bespoke Award for Sustainability



Honourable Mention Green energy progress



Honourable Mention Energy Independence

FEZ industries & customers

Plastics & chemicals



Electric vehicles & components



Engineering industry & metal structures



Food processing



Value added logistics



Total revenue
in 2022

1 425 M EUR

32 M EUR

14 M EUR

67 M EUR

88 M EUR

Others



Infrastructure



Daily public transport



Dozens of transport and logistics companies on site



15 minutes to the largest Baltic port



Direct motorway link



Car sharing



25 minutes to the airport



Direct railway link



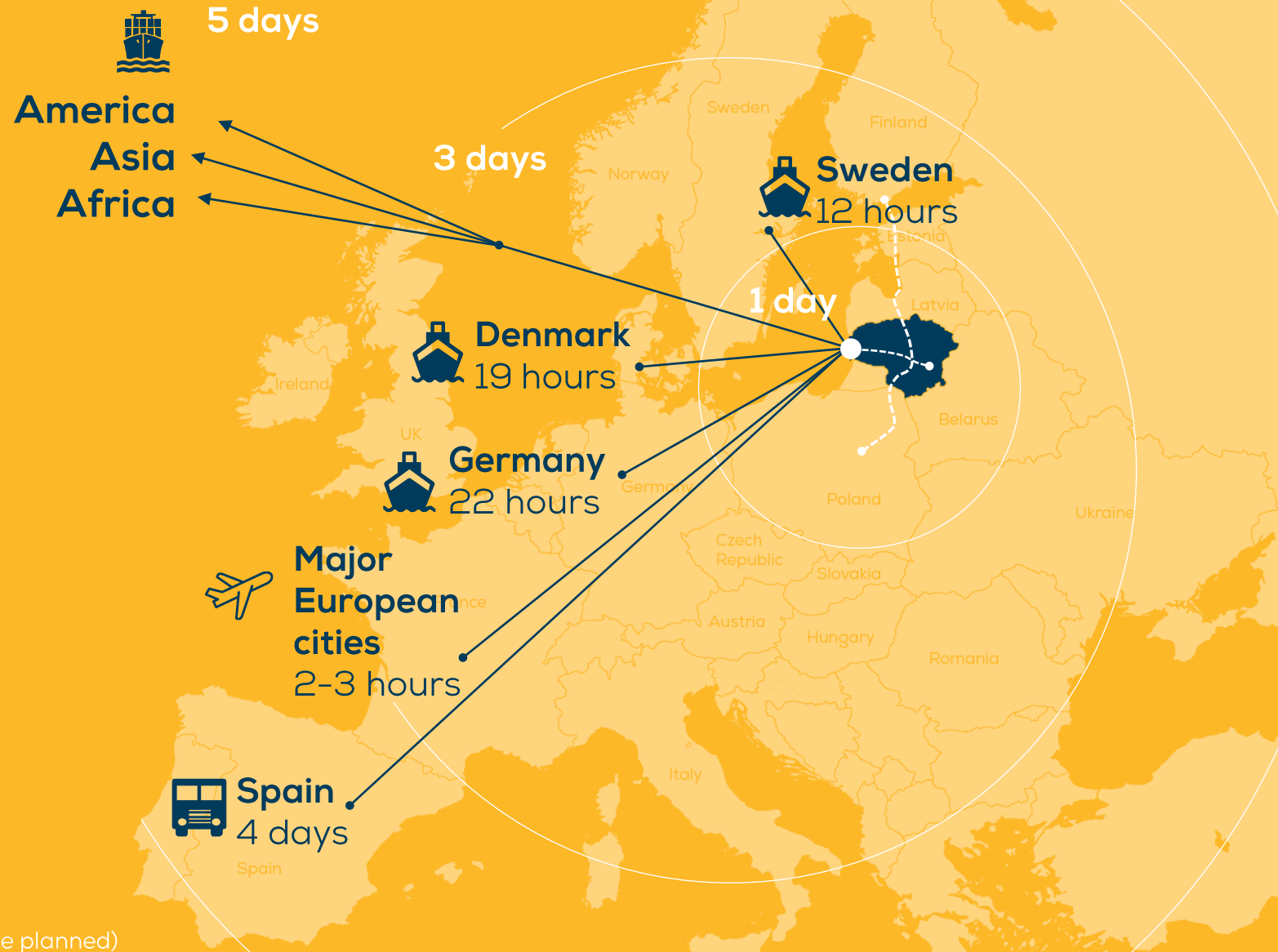
5G internet

Rapid access to

EU & rest of the World

Klaipėda is a global transportation hub:

- Well-developed road network
- Railway connections with Rail Baltica
- Northernmost Baltic ice-free port
 - 33 terminals
 - 70M tons cargo handling capacity
 - 15 m deep port (will be deepened up to 17 m)
 - Ocean container lines to USA, India
- International airport with direct flights to:
 - Copenhagen
 - London
 - Dublin
 - Riga
 - Oslo



Talent pool



173,800

Labour pool in the region³



11,200

Students in 2022 m.²



8.8%

Unemployment rate in Klaipėda city³



15

Universities, colleges and vocation schools in the city²



1 789.0 EUR

Average salary in Klaipėda city³

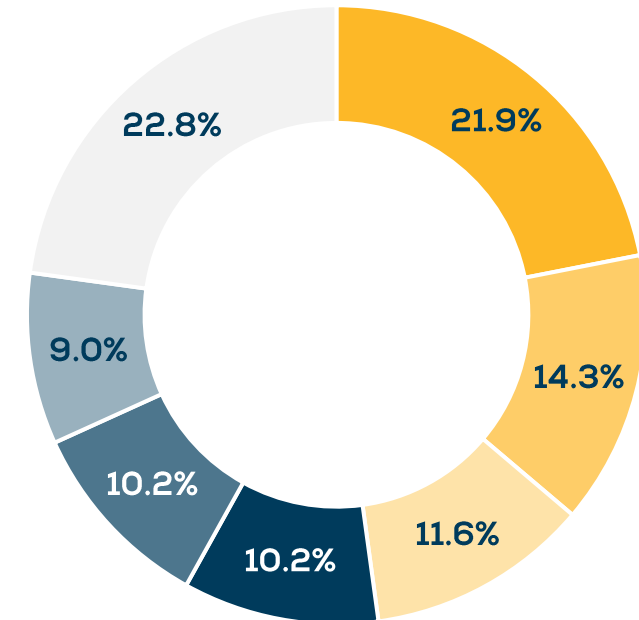


904

Students of engineering specialties in Klaipėda⁴

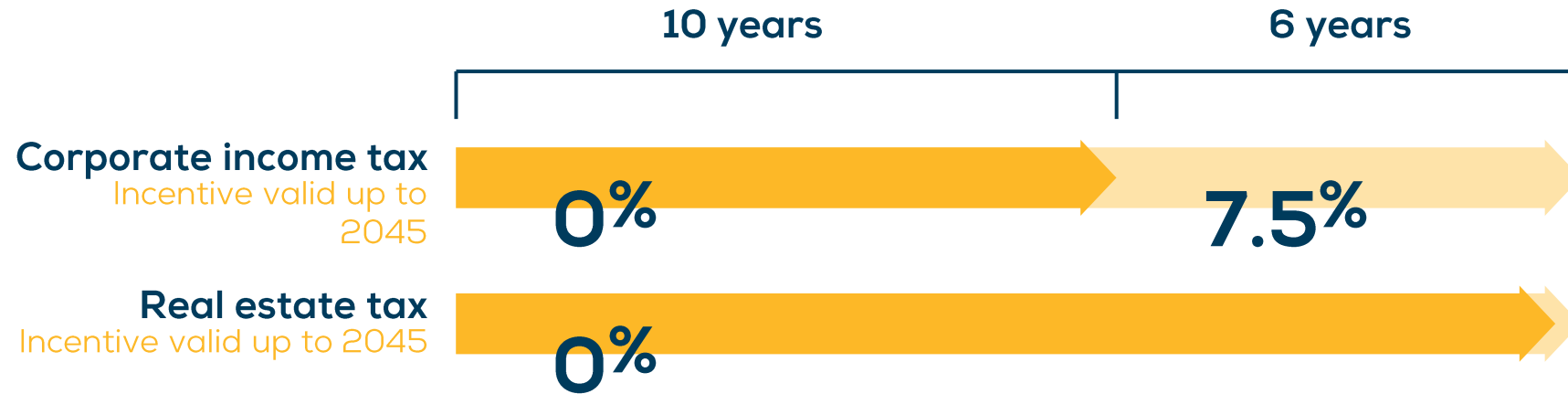
Source 1: [Statistics Lithuania, 2021](#)
Source 2: [Education Management Information System \(SVIS\), 2022-2023](#)
Source 3: [Statistics Lithuania, 2022](#)
Source 4: [Klaipėda ID, 2020](#)

Structure of skills and qualifications in 2021¹



- Manufacturing
- Transport & Storage
- Education
- Health & Social Care
- Wholesale, Trade & Repair of motor vehicles
- Construction
- Other

Tax incentives to boost your return on investments



	Small (60%)	Middle (50%)	Large (40%)
Number of employees	<50	51-249	250>
Annual turnover	<€10 Mio	€10-50 Mio	€50 Mio>
OR			
Value of company assets	<€10 Mio	€10-43 Mio	€43 Mio>

Accumulative sum of tax incentives can reach up to 60% of investments for small, 50% - for middle, 40% - for large companies:



Corporate income tax incentive applies to:

- 1M EUR asset investments for manufacturing activities
- 100.000 EUR with min 20 employees for service operations.

Klaipėda FEZ Master plan



INDUSTRIES:

- Plastics & chemicals
- Engineering industry & metal structures
- Electric vehicles & automotive components
- Value added logistics
- Food processing
- Life sciences & biotech
- Other
- Real Estate Projects
- Buildings/Premises for rent

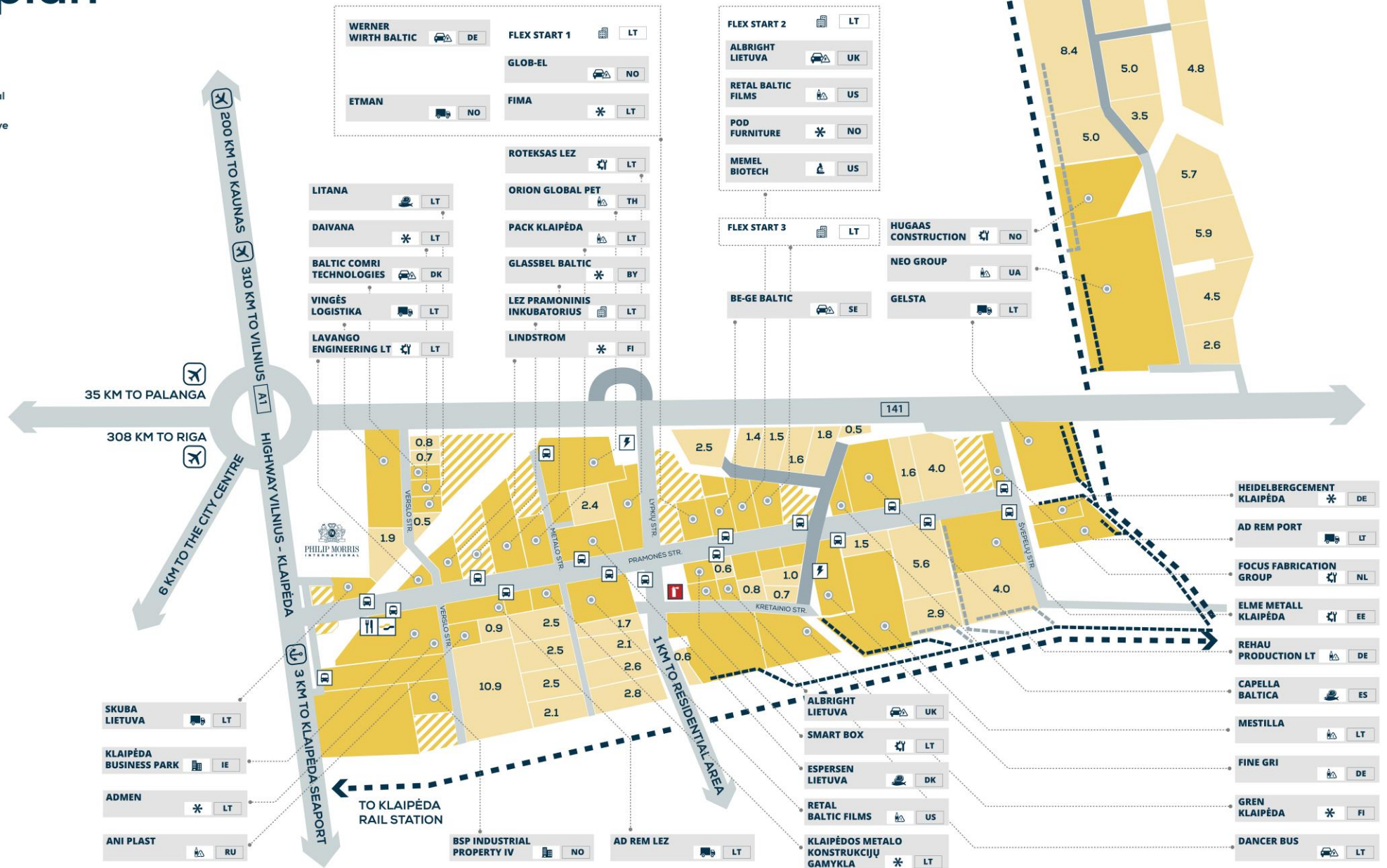
MEANINGS:

- Available sites (area ha)
- Occupied sites
- Reserved sites
- Street network
- Main & local railways
- Planned street network
- Planned railway network

INFRASTRUCTURE:

- Klaipėda FEZ Management Company
- Restaurants
- Electrical transformer station
- Fire depot
- Bus stop

2024



Fast launch

3 days

- | Premises for rent from us or our partners

3 months

- | FlexStart project: production and office spaces adapted for tenants' custom needs in less than 3 months

6 months

- | Site lease with building permits with pre-designed building options

12 months

- | We can take all development risks & hassle - build, manage, rent or sell it to your tenants



fDi
FREE ZONES
OF THE YEAR
2017

**Awarded for Fast Launch at
Global Free Economic Zone
Of the Year Awards 2017**

by fDi Intelligence

FLEXSTART 01



Glob-EI

Fima SMART
INFRASTRUCTURE SOLUTIONS



fDi
FREE ZONES
OF THE YEAR
2019

**Honourable Mention
for FlexStart**
by fDi Intelligence

Total area: **8000 sq. m.**

The premises are easily adaptable to set up
and launch activities **within 3 months.**

Fully rented out, just after being opened **in 2018.**

FLEXSTART 02



Memel Biotech
POD Furniture

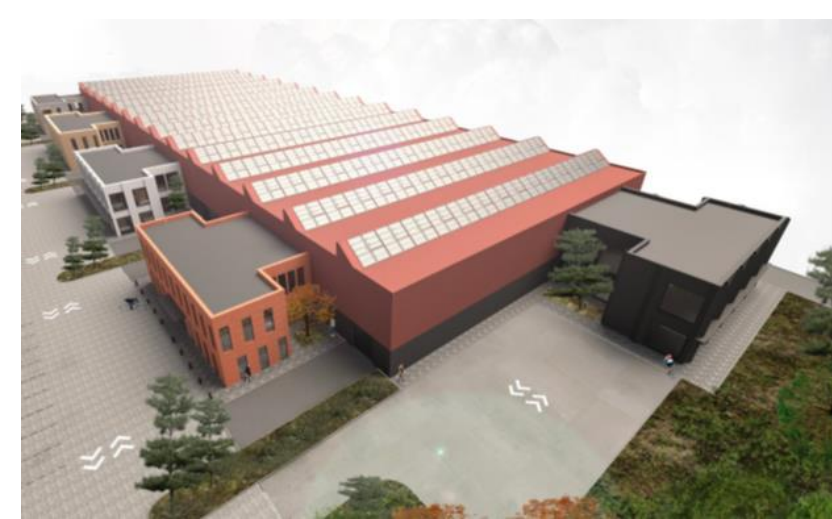


FLEXSTART 02

Building features **showcase windows on the ground floor**, allowing retail operations or a showroom with a warehouse nearby.

Total area: **8500 sq. m.**

The premises are easily adaptable to set up and launch activities **within 3 months.**



FLEXSTART 03

Klaipėda liveability

Lithuania's No.2 city

for quality of life¹
for FDI strategy³

The 3rd youngest city

in Lithuania, 45% of population is under 40²

Languages

10% of residents speak **German**,
39% English and **52% Russian**.²

Perfect for an active lifestyle:

Sailing, kiteboarding, wakeboarding, forest trekking, cycling, bird watching and sunbathing at UNESCO World Heritage Site protected sandy beaches. All just 10 min drive from any workplace.

Source 1: [Lithuania's local authority index 2022](#)
Source 2: Lithuanian Department of Statistics, 2022
Source 3: [Klaipėda ID](#), 2023



Work & Life balance



Modern offices and co-working centres

- Lighthouse
- Spiečius
- Baltic Tech Park
- Kultūros fabrikas
- 103
- Vitė
- Liepų biurai
- M19
- & many more



City of festivals

- Sea Festival & Baltic Sail
- Klaipeda Sound Festival
- Karkle Festival
- Light Festival
- Castle Jazz Festival
- Violoncello festival
- Carillon Festival
- & others



City of great food and design

- Second best restaurant in Lithuania..
- .. & dozens of other gourmet places.
- Dozens of designers & creatives
- .. as well as their studios & workshops.
- Art galleries ..
- .. & street art hotspots.
- Great local beer, clubbing ..
- .. & gourmet cocktails.

Let's talk



Karolis Pilipauskas
Sales and Marketing Director
at Klaipėda FEZ

E: karolis@fez.lt

T: +370 672 72703

www.fez.lt

[3D model of Klaipėda FEZ](#)



KLAIPĖDA
FREE ECONOMIC ZONE